



Monthly Mews

APRIL 2024

NEW MEDICATION PROTOCOL

Baytril Injectable 22.7 mg/ml

STOP OTHER FLUIDS AND MEDICATIONS WHILE GIVING BAYTRIL.

INCOMPATIBLE with 0.9% NaCl, LRS, Plasmalyte and NormR - flush IV line before and after administration.

For IV: Dilute 1:1 with sterile water and administer over 20 minutes. Do not bolus straight solution as this can cause seizures.

SHOE DRIVE

Collecting shoes until May 1

VCA Calvert Veterinary Center is doing a shoe drive for Saving Grace Animal Rescue. There is a box located in the employee lounge. For more information, go to www.funds2orgs.com to learn more about the organization they are collecting shoes for!



VOLUNTEERS NEEDED

AAVEC is looking to be a sponsor again at the 2024 Annapolis Pride Parade and Festival.

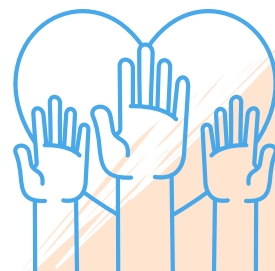
To do this, we need several volunteers and someone to be the point person. Adriane Watson (our marketing person) can provide the specifics on what that entails, but it's essentially setting up the table/booth and staffing it. Please let Joe know if you are interested in participating and/or being the point person.

Details:

The date: Saturday 6/1

Setup begins: 9am

Parade and festival go from 12p - 5p



Rabies

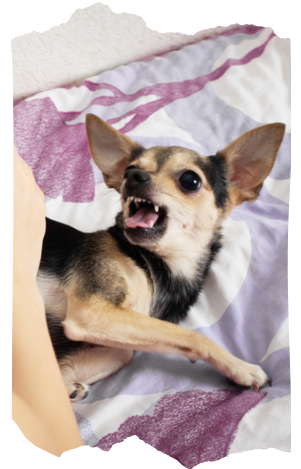
Employees that have not received a rabies vaccine cannot handle any rabies suspect patients or specimens for submission.

Please consider getting the pre-exposure rabies vaccine.

If you are a full time employee and have passed your initial 90 days, you are eligible to have AAVEC pay for your rabies vaccine.

RABIES & VACCINE FACTS

- Rabies is a serious illness that almost always results in death. The rabies virus infects the central nervous system.
- Symptoms may occur from days to years after exposure to the virus and include delirium (confusion), abnormal behavior, hallucinations, hydrophobia (fear of water), and insomnia (difficulty sleeping), which precede coma and death.
- Humans can get rabies if they have contact with the saliva or neural tissue of an infected animal, for example through a bite or scratch, and do not receive appropriate medical care, including rabies vaccine.
- The rabies vaccine has been in use for over 40+ years.
- The vaccine is extremely safe and effective.



HOW DO I GET MY RABIES VACCINE?

- Contact the health department (2 choices below) to schedule an appointment (no walk-ins).
- Schedule the 2-vaccine series at least 3 weeks in the future.
- **Anne Arundel County Health Department 410-222-7247**
 - Let Amanda Bargas know as soon as you schedule the appointment so a check can be requested from Ethos. It takes up to 2.5 weeks to get the check.
 - If the appointment is canceled or you do not give Amanda enough notice, you may be responsible for paying the \$315 fee.
- **Queen Anne's County Health Department 410-758-0720 x4432**
 - Tell them you are an AAVEC employee.
 - Let Amanda Bargas know as soon as you schedule the appointment so she can provide you with a letter stating that you are an AAVEC employee.
 - This letter must be taken to the appointment so that they know to bill AAVEC directly.

Attendance Policy

EFFECTIVE 4/1/2024

Two of AAVEC's Core Values are Dependability and Reliability. These values are crucial to the success of AAVEC. Without the dependability and reliability of the team, we would not be able to care for our patients. Because of these values and our commitment to providing the best clinical care possible, we have decided to create an updated Attendance and Punctuality policy.

POINT SYSTEM

Absence (1 point): Any unscheduled absence, missed shift, regardless of the reason. In the event of a personal medical illness (i.e. the flu), employees will be charged for only one (1) point/absence when away from work for one or more consecutive scheduled workdays.

Tardy (0.25 point): Punching in 10 minutes or more past the start of a shift.

No call/No show (9 points): Absence that is not reported prior to the start of your shift using call-off procedures. Two consecutive days of no call/no show will be considered job abandonment or resignation without notice.



*Absences or tardiness will be tracked over a rolling six (6) month period; six (6) months after acquiring a point, the point will fall off the employee's record.

*A point will not be charged for Military Leave, Worker's Comp Leave, Court Subpoena, Probation Officer visits, FMLA eligible events, Bereavement Leave, Jury Duty, pre-scheduled vacation days, or approved Leaves of Absence as defined by the handbook or that is otherwise approved by the Department Manager. Documentation may be required to substantiate the legitimacy of these absences or as soon as possible in emergent situations.

Attendance Policy

FAQS BY JOSEPH GRAHAM

- What is the purpose of the policy?
 - To ensure our coworkers have the support and help needed to provide the highest quality clinical care to our patients. Missing shifts causes disruption to the hospital and can negatively affect patient care and cause increased stress to your teammates.
- Why did we change our policy?
 - Our prior policy stated: "Unexcused or excessive absenteeism or tardiness may be grounds for disciplinary action, up to and including termination."
 - Essentially, this is still our policy, we are just ensuring that AAVEC's expectations are clear. I believe it's unfair to hold someone to an expectation that hasn't been clearly communicated.
- This seems punitive, why I am getting punished for being sick?
 - A "point" is neither positive nor negative. The purpose of the point system is to ensure that staff clearly know where they stand in regard to the expectations. I anticipate and except most of us to have points. I was our unexpectedly this week...so I have 1 point. It doesn't become a negative until you accumulate a significant number of points.
- Will I get a point if I am sick and have a doctor's note?
 - Yes. But again, I expect everyone to have points. The goal is not to have points, the goal is to keep the points (absences) to a reasonable level so we can take care of our patients and reduce the stress to our teammates.
 - A doctor's note is not needed unless you are out 3 or more days.
- I think this policy will cause people to come to work sick and spread their germs which will result in other staff getting sick?
 - If you have a fever, GI symptoms, pain, etc, or just feel terrible, you should absolutely stay home. If you come to work sick, you may be making yourself sicker or causing other to get sick. Please be considerate of your teammates.
- If I have the Flu or covid and miss 3 shifts, will that be 3 points?
 - No, that would be 1 point.

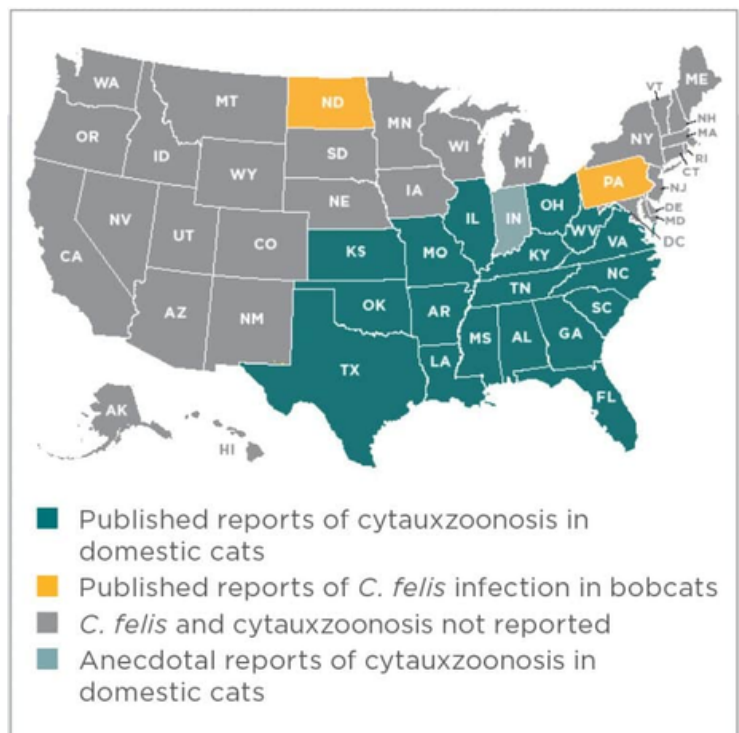
Vet Med Ed

CYTAUXZOOM FELIS INFECTION IN CATS

Cytauxzoon felis is a disease that affects outdoor adult cats in rural or semi-rural areas. It is most often seen in midwestern and southern states, with cases peaking in early spring. Since its discovery in Missouri in the 1970s, *Cytauxzoon felis* has been spreading. It has been reported in Missouri, Arkansas, Florida, Georgia, Louisiana, Mississippi, Oklahoma, Texas, Kentucky, Kansas, Tennessee, North Carolina, South Carolina, Nebraska, Iowa, Virginia, and Illinois. Bobcats are the natural host for *Cytauxzoon felis*.

Clinical signs for infected cats usually begin 5-14 days (10 on average) after infection by tick transmission. In some cases, clinical signs were documented as early as 36-48 hours after infection. Affected cats present with reduced appetite, lethargy, icterus, pallor, organomegaly, and fever. Pancytopenia can be seen on CBC testing. Chemistry results usually reveal hyperbilirubinemia, hyperglycemia, and hypoproteinemia.

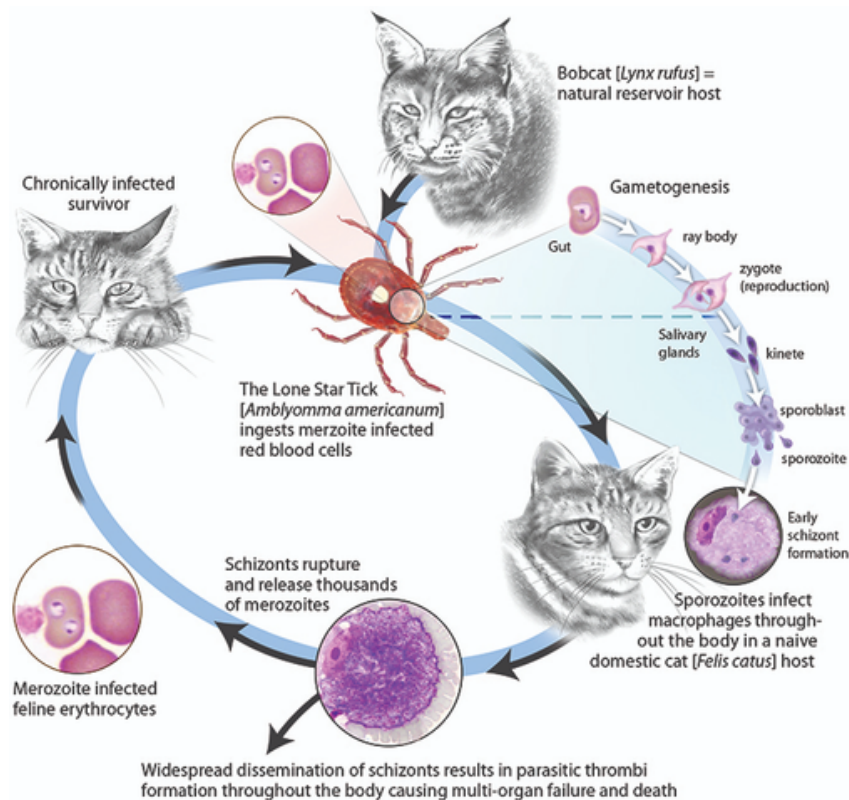
Transmitted by *Amblyomma americanum* (lone star tick) or *Dermacentor variabilis* (American dog tick), *Cytauxzoon* infects cats when the sporozoites in the tick's salivary glands pass onto the cats during feeding.



CYTAUXZON FELIS INFECTION IN CATS

Cats living near heavily wooded, low-density residential areas particularly close to natural habitats where both ticks and bobcats may be in close proximity are at highest risk of infection.

Sporozoites enter mononuclear cells and undergo a form of asexual reproduction where they are released as merozoites that are then taken up by the red blood cells.



The disease progresses rapidly and death within 36 hours is common. Treatments with supportive care and anti-protozoal drugs have been successful. A large case study of cats with acute cytauxzoonosis treated with atovaquone and azithromycin combination therapy and supportive care resulted in a survival rate of 64%.

Tick control and prevention are the best ways to provide protection to cats, especially those that go outdoors.

Sources:

<https://tvmdl.tamu.edu/2023/10/10/cytauxzoon-felis-infection-in-two-cats/>

<https://todaysveterinarypractice.com/parasitology/cytauxzoonosis-in-cats/>

<https://www.merckvetmanual.com/circulatory-system/blood-parasites/cytauxzoonosis-in-cats>

Ravin' Reviews

"They took wonderful care of my dog while providing constant communication about her options, potential costs, her care & recovery."



"My pet was treated extremely well. Everyone was polite, efficient and just very, very nice."

"We did not get good news but we got the best possible care and attention. Our dogs are our family. Each and every staff member we dealt with was so sweet, so loving and so compassionate (as I was practically in a puddle on the floor). Everyone took time to explain what to do to keep our boy comfortable until... With medication, he is almost back to acting like his old self. They walked me through what to expect during each stage of this new journey. Now we are going to defy the odds and prove everyone wrong!"

"Thanks to everyone for the loving care and for the follow-up calls. You are appreciated more than you know."

"Our experience at your hospital was very well indeed. The doctors and staff were superior and everything was explained to us very well. I am thankful for the doctors and staff for their superior work.

Thanks again for your wonderful help during my little dog Terah difficult health crisis. Thanks again."

"Absolutely the best care! Neo Acton is eating well and back to his spoiled self! Happy and Healthy!"

"I highly recommend AAVEC! My dog ingested a piece of a toy and they took great care of him. I know he's in good hands when he's there.

All the staff are helpful, professional, and kind. I had lots of questions and they were always available to answer them."



Celebrating You

Birthdays

4/1 Brooke Yarnell
4/3 Sarah Davis
4/5 Anaya Freeman
4/9 Tayler Hands
4/14 Megan Hazlewood
4/16 Sami Ratliff
4/18 Krista Rumer
4/19 Bryan Channas
4/22 Kristen Taylor
4/23 April Playdon
4/24 Andi Leon



Anniversaries

4/1 Bryan Channas 8 years
4/2 Regan Dunn 12 years
& Taylor Keene 6 years
4/3 Emily DiNicolo 1 year
4/7 Angelyn Givens 2 years
4/8 Megan Noyes 2 years
& Rachel Germerhausen 2 years
4/24 Jennifer Cox 18 years
& Meranda Ehrlich 2 years

Welcome to the Team

Reese Yocum-Perez
Assistant

Julia Larsen
Technician

Katie Cline
CST

Administrative Professionals Week April 21-27

THANK YOU TO OUR AMAZING
CST AND VET ADMIN TEAMS!!

You keep us running smoothly
and our clients happy!



Word Search

T Q N A T C W E P E J B Z L E I C Q C O M V E A W
R N O A V L M X N W J W U X O W W E I A E F N V M
A D G E O D E I N R J D O T J L F V R U E B I H A
Z L A W M O P R R K O K P R O A A C X N I U D D F
O B S P B I O L G O F F Y I Z R A T T Q R N I W S
D K O V D W Z U A O P J L O L I P A O S C W M Z G
O F J O Y H F W I H D I L O N I N H O S W V O J E
N O L D O X Y C Y C L I N E X Y D D A N J L T M N
E M G G W L A N H M N D P I L A I O E N V K E L I
A E O Y Z H P D Q A P C B O R O C S C H O W D O M
A P O M O R P H I N E A I N L O W I M A A L E R A
A R O Y R H E E R N M R W F O C L Q N X I B M E T
T A G H V I K E C I I P D G J T D E R S L N X T E
O Z M G X J N A Y T P R E D I M E S O R U F E U K
P O K X Y I L F U O E O A L A T R O C Y Z Y D B E
G L O M M O A A N L L F Q P E N I Z I L C E M L N
P E H A R Z A M S G O E S W E A E N A Y S D N A A
N U P O F J B O Y W Z N W L G H D R V L B O V A D
L O T L E V E T I R A C E T A M J V F B R O Y W N
D E W A Q O Q I O R M N O R E P I N E P H R I N E
K W Q A K H M D W B I R O B E N A C O X I B P F B
E D I R P A S I C K H E N O C I H T E M I S G V O
J F P Z F G H N D V T E L M I S A R T A N V R M M
Y C S P M H O E Y M E L O Z A R P O T N A P B T I
S G A J N V M U S Z M V N V R Y M H B U O C C B P

Albuterol
Butorphanol
Cisapride
Dopamine
Famotidine
Heparin
Levetiracetam
Marcaine
Norepinephrine
Pimobendan
Simethicone
Trazodone

Amlodipine
Carprofen
Clopidogrel
Doxycycline
Fentanyl
Ketamine
Lidocaine
Meclizine
Omeprazole
Robenacoxib
Sotalol
Ursodiol

Apomorphine
Cefazolin
Dexmedetomidine
Enrofloxacin
Furosemide
Ketorolac
Mannitol
Methimazole
Pantoprazole
Ropinirole
Telmisartan
Zycortal